



unitedstreaming in Action: Embedding Videos

What is embedding?

When you embed a downloaded video segment, you are inserting it right into your document.

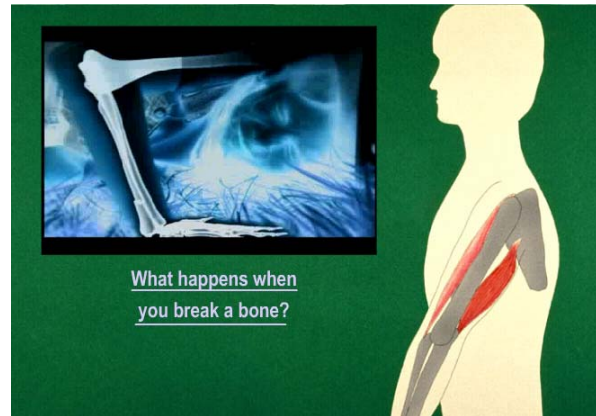
In PowerPoint, you can choose to have your embedded video play automatically or on mouse click.

Reasons to embed to a video:

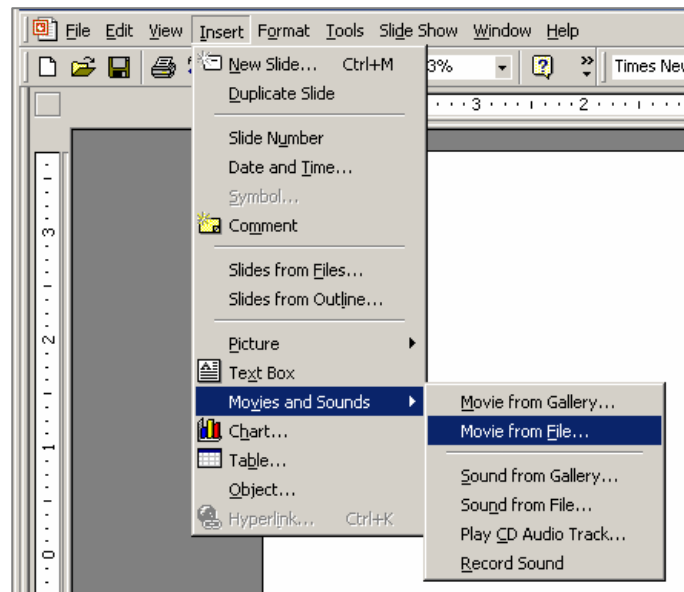
- To have the video play automatically during a presentation.
- To hide the media controls, such as play, pause, stop, and volume.
- To add text boxes and images that serve as visual cues while the video is playing.

Embed a video in PowerPoint

- Step 1 Download a video segment to a designated folder.
- Step 2 Create a new PowerPoint document and save it to the same folder.
- Step 3 Go to "Insert" > "Movies and Sounds" > "Movie from File."
- Step 4 Navigate to where you saved the downloaded video and select it.
- Step 5 Click "OK"
- Step 6 Decide whether to have the video play automatically or not.
- Step 7 To resize your video:
 - Click once on the video
 - Position the cursor over one of the four corner handles of the image. Hold down the Shift key, left click the mouse button and drag to resize the image as needed
- Step 8 To test your video, go to "Slide Show" > "View Show." When you position the cursor over any part of the video image on the slide, the cursor will change from an arrow to a pointing finger. If you chose the option to start the video manually, left click to start the play.



Example of an embedded video segment



For additional embedding information, go to the
Professional Development section of www.unitedstreaming.com